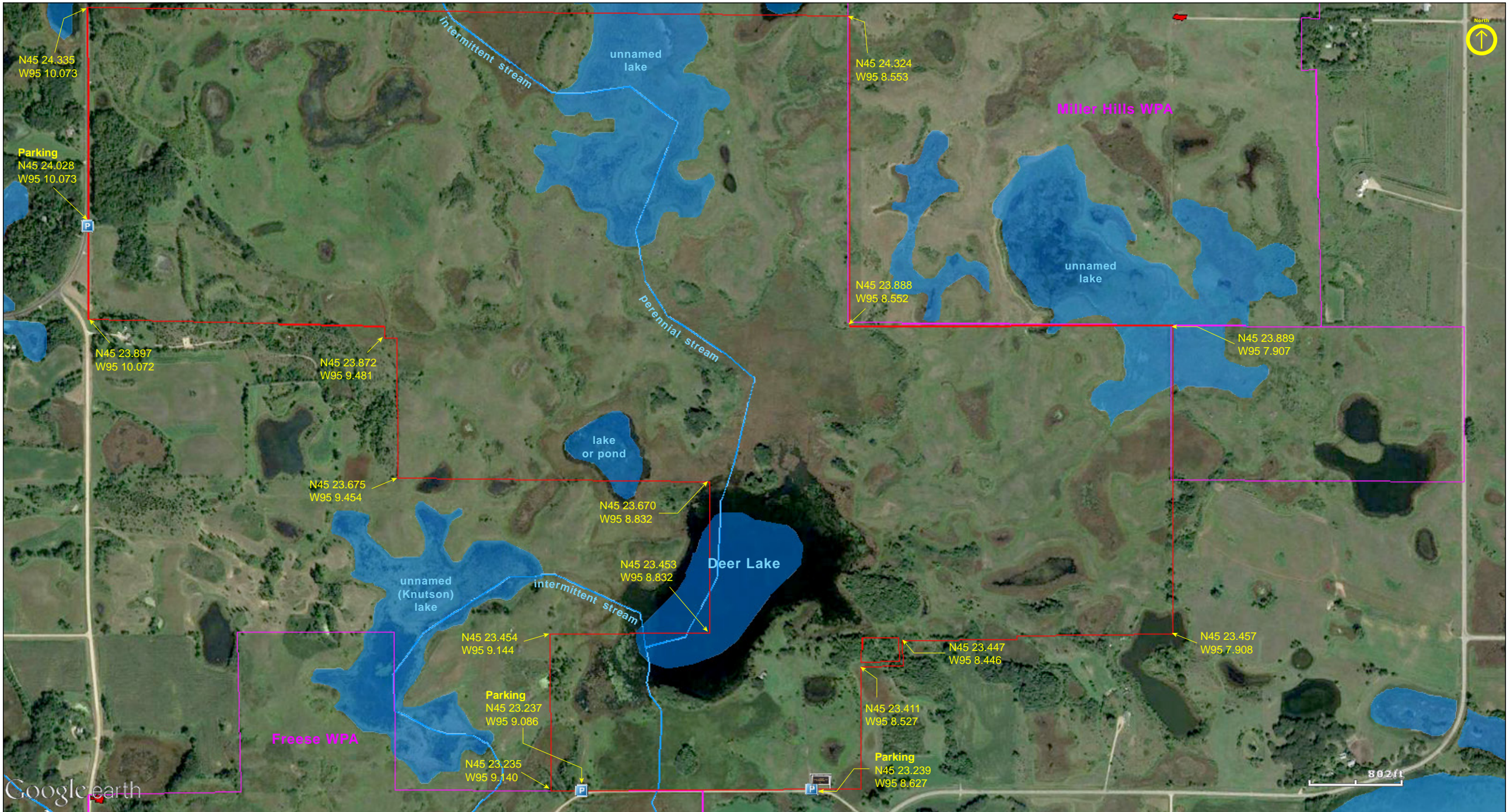


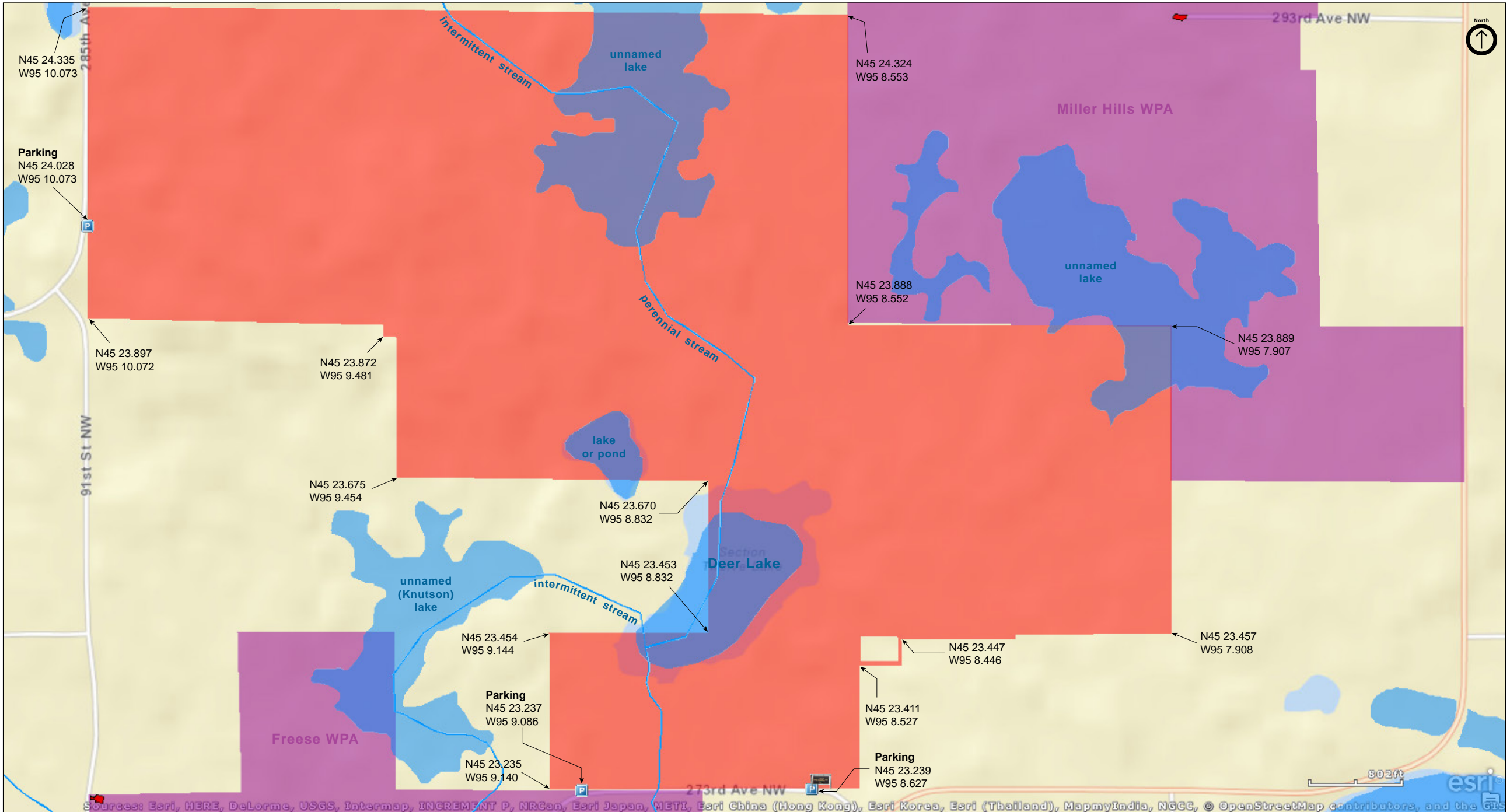
# Leif Mountain

Kandiyohi County



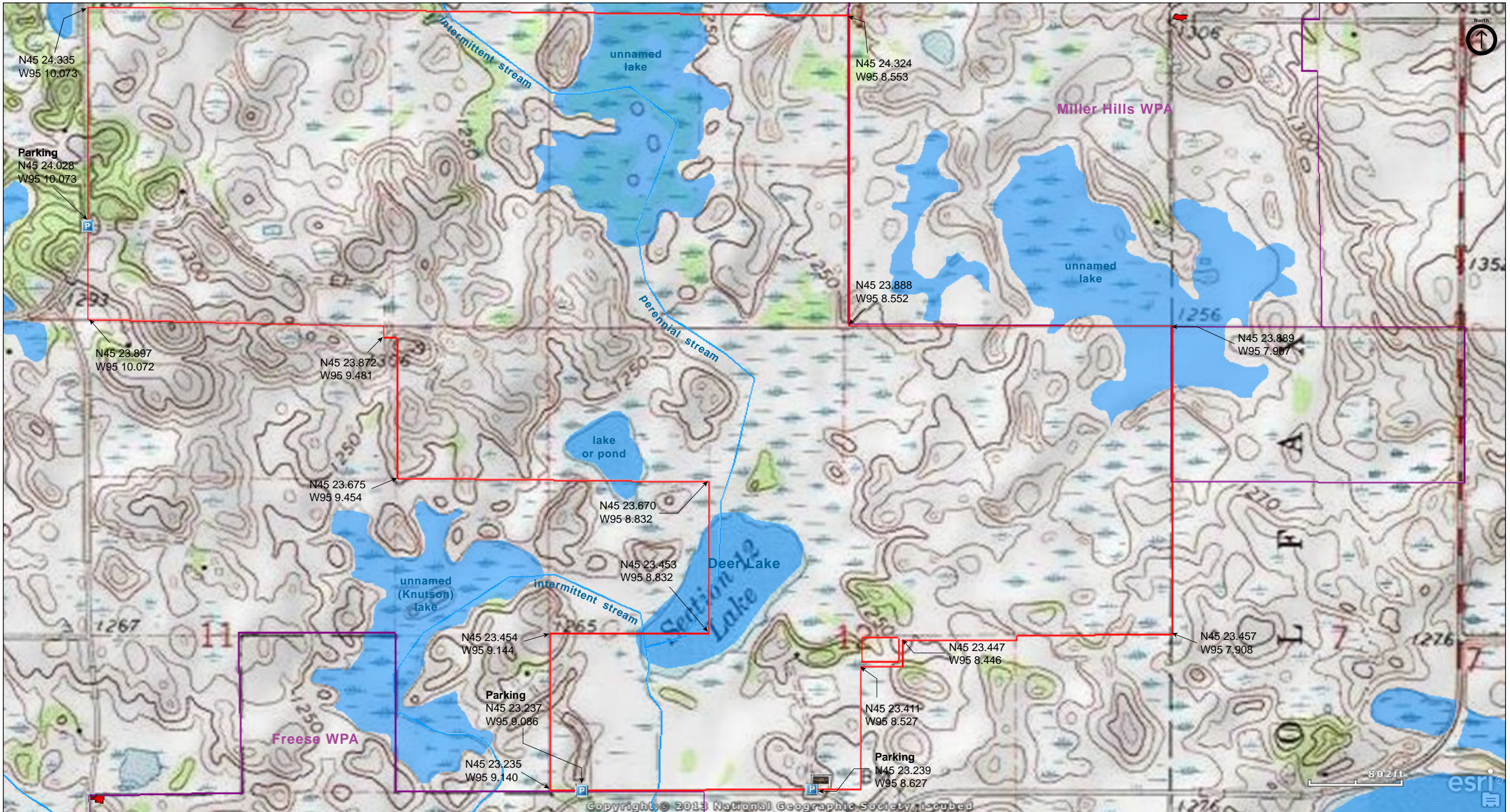
# Leif Mountain

Kandiyohi County



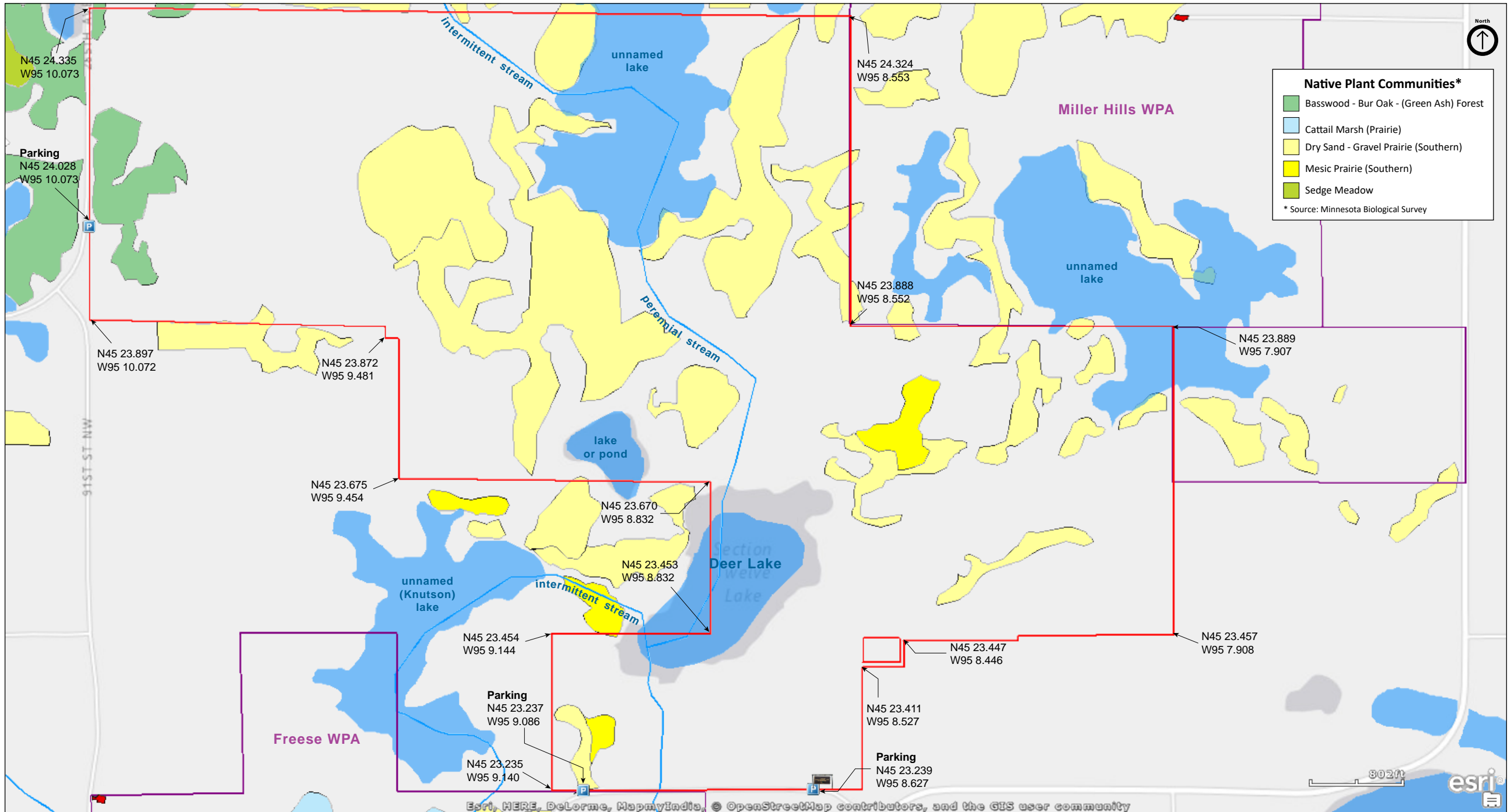
# Leif Mountain

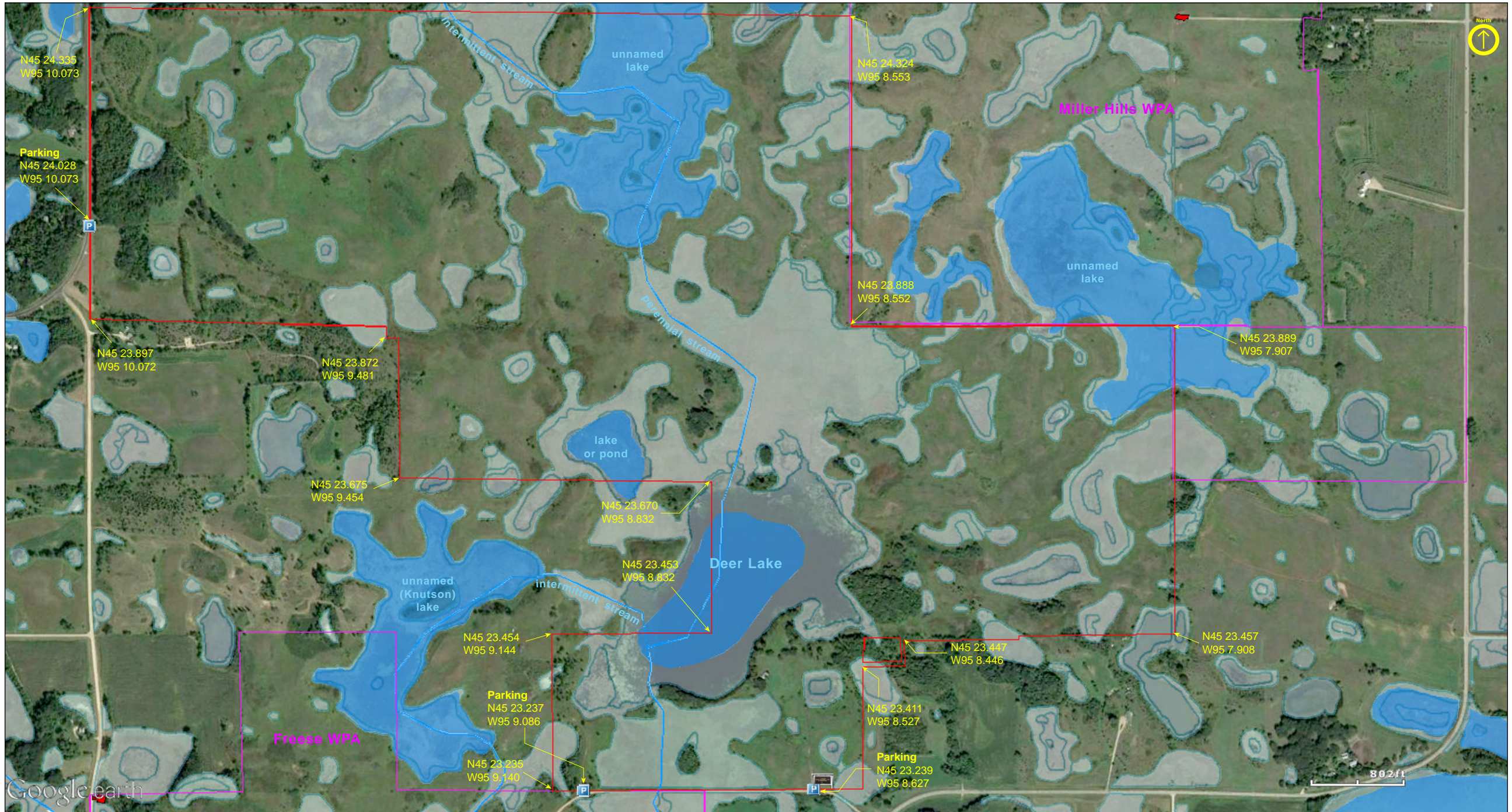
Kandiyohi County



# Leif Mountain

Kandiyohi County





# Leif Mountain

## **Directions and Notes from The Nature Conservancy**

From Paynesville, take State Highway 55 west to Belgrade.

From Belgrade, take County Road 19 west 7 miles to County Road 18. Follow County Road 18 south (County Road 18 turns into County Road 1 for 3 miles). Take a right (going west) on 80th Street NW.

Leif Mountain is located on the right side of 80th Street NW. Look for the preserve sign.

## **Notes from MinnesotaSeasons.com**

### **South, 80th St. NW / 273rd Ave. NW (by preserve sign)**

N45 23.239, W95 8.627

### **Southwest, 80th St. NW / 273rd Ave. NW**

N45 23.237, W95 9.086

### **West, 285th Ave. N**

N45 24.028, W95 10.073

## **DISCLAIMER OF WARRANTIES AND LIMITATIONS OF LIABILITY**

MinnesotaSeasons.com, The Nature Conservancy, U.S. Department of Agriculture, Forest Service, U.S. Fish and Wildlife Service, the state of Minnesota, the Minnesota Department of Natural Resources, and their employees, make no representations or warranties, express or implied, with respect to the use of or reliance on the data provided herewith, regardless of its format or means of transmission. There are no guarantees or representations to the user as to the accuracy, currency, completeness, suitability or reliability of this data for any purpose. THE USER ACCEPTS THE DATA AND/OR SOFTWARE "AS IS" AND ASSUMES ALL RISKS ASSOCIATED WITH ITS USE.

IN NO EVENT SHALL MINNESOTASEASONS.COM, TNC, USDA-FS, USFWS, OR MNDNR BE LIABLE FOR ANY DIRECT, INDIRECT, INCIDENTAL, SPECIAL, EXEMPLARY, OR CONSEQUENTIAL DAMAGES (INCLUDING, BUT NOT LIMITED TO, PROCUREMENT OF SUBSTITUTE GOODS OR SERVICES; LOSS OF USE, DATA, OR PROFITS; OR BUSINESS INTERRUPTION) HOWEVER CAUSED AND ON ANY THEORY OF LIABILITY, WHETHER IN CONTRACT, STRICT LIABILITY, OR TORT (INCLUDING NEGLIGENCE OR OTHERS) ARISING IN ANY WAY OUT OF THE USE OF THIS DATA, EVEN IF ADVISED OF THE POSSIBILITY OF SUCH DAMAGE OR FOR ANY CLAIM BY ANY OTHER PARTY.

Your use of the data is acceptance on your part of the terms and conditions set forth herein.