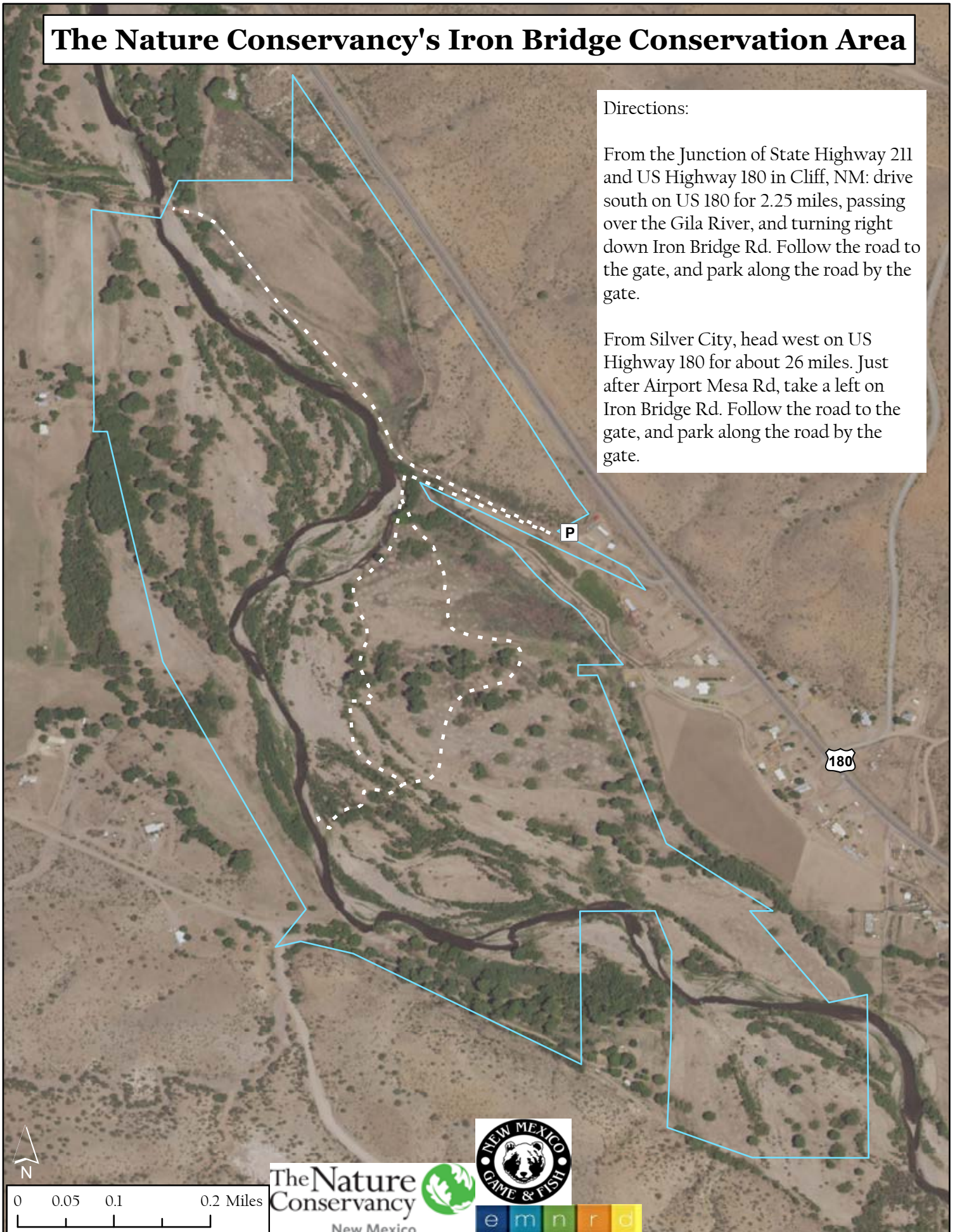


# The Nature Conservancy's Iron Bridge Conservation Area

## Directions:

From the Junction of State Highway 211 and US Highway 180 in Cliff, NM: drive south on US 180 for 2.25 miles, passing over the Gila River, and turning right down Iron Bridge Rd. Follow the road to the gate, and park along the road by the gate.

From Silver City, head west on US Highway 180 for about 26 miles. Just after Airport Mesa Rd, take a left on Iron Bridge Rd. Follow the road to the gate, and park along the road by the gate.



0 0.05 0.1 0.2 Miles

