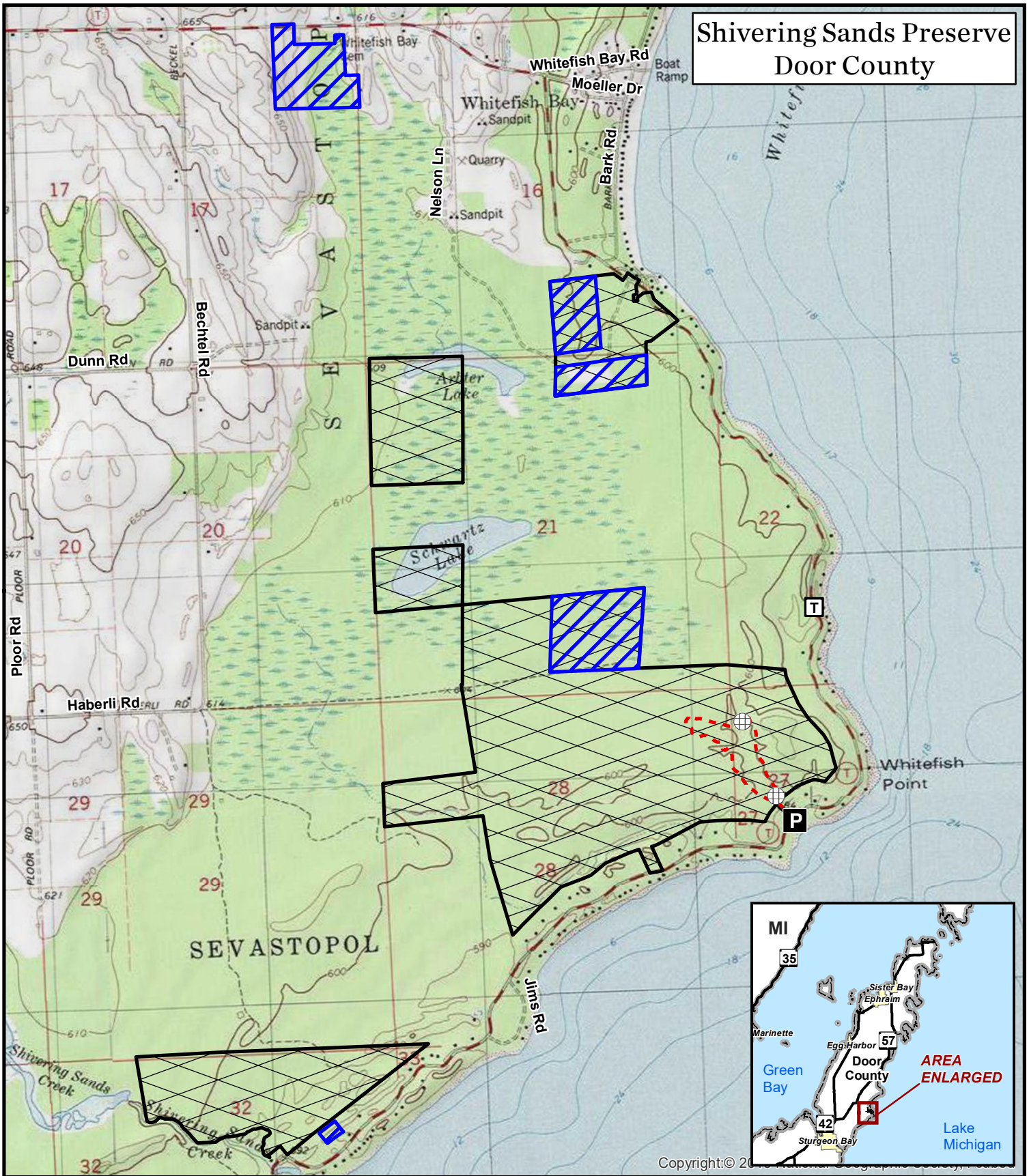


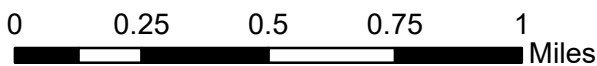


Shivering Sands Preserve Door County



-  Property of The Nature Conservancy (TNC); open for fall turkey (after November 1st), and deer hunting.
-  Property of TNC open for trapping, deer, turkey, bear and small game hunting; registration optional.

-  Rustic trail
-  Footbridge
-  Parking



Shivering Sands Preserve is located in the State of Wisconsin, Door County, T28N-R27E, Sevastopol Township, sections 16, 17, 21, 27, 28 & 32; 678 acres.

1:24,000



Protecting nature. Preserving life.

2/11/2020

hunting_ShivSands.mxd